

LANGLEY'S



Saturday 15th -
Sunday 16th
September 2018

\$535 per person twin share
\$650 single supplement

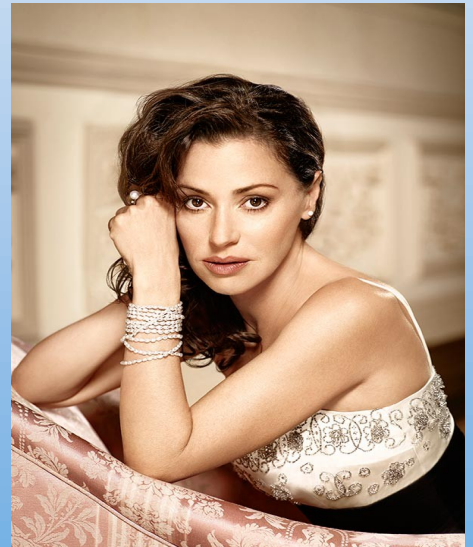
\$200 deposit per person required on booking*
Final payment due: 13th August 2018

Saturday 15th September 2018

7.30am Depart Langley's Depot, 4 Jannali Road, Dubbo
8.15am Pick up at Wellington BP Service Station
9.00am Pick up at Molong Railway Station
9.30am Pick up at Orange Railway Station
10.15am Pick up at Sweet Caramel, Bathurst
2.30pm Book into Harbourview Hotel, North Sydney
5.00pm Dinner at hotel
6.30pm Transfer to Opera House
7.30pm "Evita" commences
11.00pm Return to North Sydney Harbourview Hotel

Sunday 16th September 2018

7.30am Breakfast at North Sydney Harbourview Hotel, full buffet.
9.00am Depart Hotel
Sydney City Highlights Tour
Lunch (own expense)
2.30pm Comfort stop at Sweet Caramel, Bathurst
4.15pm Drop off at Orange Railway Station
4.45pm Drop off at Molong Railway Station
5.15pm Drop off at Wellington BP Service Station
6.00pm Arrive at Langley's Depot, 4 Jannali Road, Dubbo



THIS PACKAGE INCLUDES THE FOLLOWING:

- All coach travel and transfers, in a fully air conditioned, restroom equipped coach
- "A reserve" ticket to Evita at the Sydney Opera House– Joan Sutherland Theatre
- Dinner, bed and full buffet breakfast at North Sydney Harbourview Hotel

**Deposit is non refundable as it is required to purchase your show tickets. A small administration fee will be charged if booking is cancelled.
Itinerary maybe subject to change.*

Postal - PO Box 1190 Dubbo NSW 2830 Depot - 4 Jannali Road Dubbo NSW 2830
Phone - 02 6882 8977 Fax - 02 6882 8164 Mobile - 0419 608 168
Email - contact@langleyscoaches.com.au Web - www.langleyscoaches.com.au
Orana ABN 28 002 338 776